

Cordless Cellular Shades

INSTALLATION INSTRUCTIONS

Congratulations on purchasing Cordless Cellular Shades from Blindster. This window treatment is perfect for any room in your home where you need the utmost in privacy and glare reduction. To properly install your new shade, please follow these instructions.

STEP 1: CHECK YOUR PACKAGE CONTENTS

Before you get started, check your packaging to verify you received the right items in your mounting hardware kit. You should have the following items:

Part	Quantity
Mounting bracket	2 (For shades up to 36" wide) 3 (For shades 37" to 52" wide) 4 (For shades 53" to 72" wide)
1 1/8" Screws	2 Per bracket
Hold down brackets	2 (OUTSIDE MOUNT ONLY)
3/8" Screws for hold downs	4
Handle for bottom rail	1 (Shades up to 59" wide) 2 (Shades over 59" wide)

Note: Mounting hardware kit includes one extra screw of each size noted in table above

STEP 2: TOOLS FOR THE JOB

After verifying you have all the items required in the mounting hardware kit, locate and make handy the following tools:

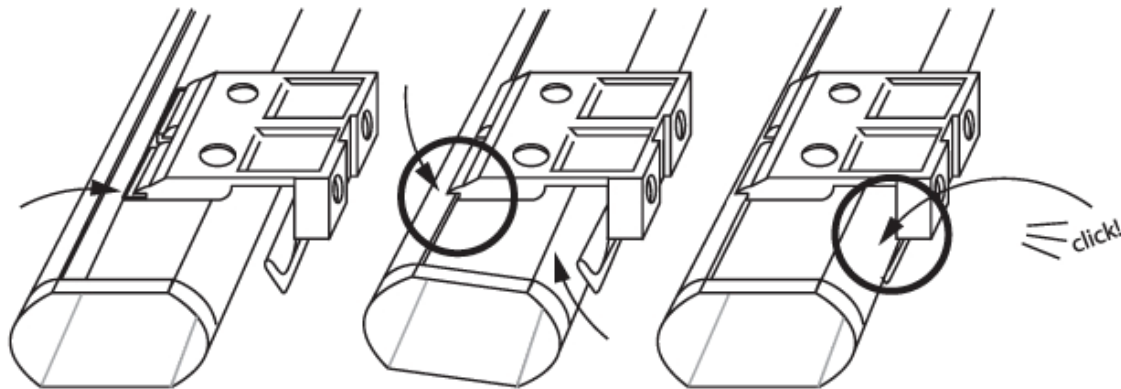
- Screwdriver
- Pencil
- Level
- Tape measure
- Drill
- Step stool

Note: If mounting shade into dry wall or plaster, use #6 plastic anchors (not included in mounting hardware kit). When drilling, use a 3/32" drill bit for screws and a 1/4" drill bit for wall anchors.

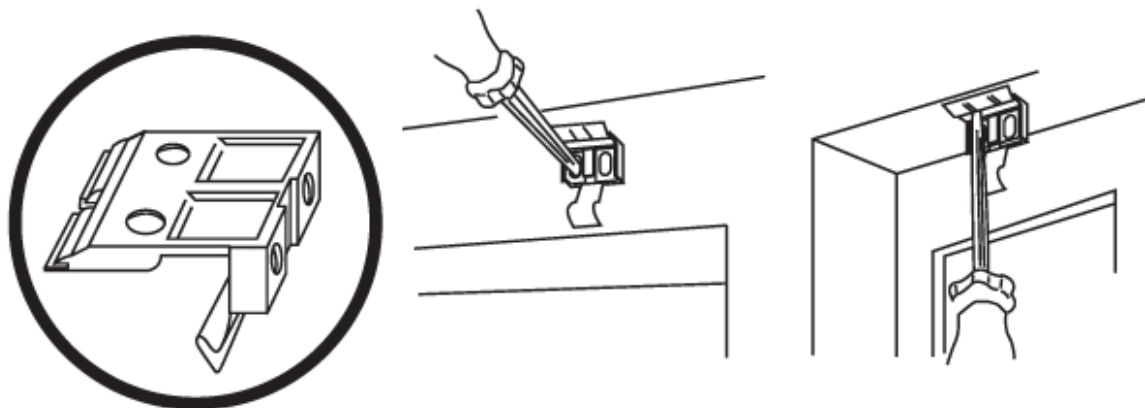
STEP 3: INSTALLING THE BRACKETS AND HEAD RAIL

After you've gathered all items in the mounting hardware kit and the tools you need, it's time to begin the installation process.

Remember that one mounting bracket should be placed about 1" to 6" from either end of the head rail. If your shade is wide enough to require 3 or more brackets, space them as evenly as possible between the two outer brackets. It's also important to place them in a manner that doesn't interfere with the function of the cords and mechanisms inside the head rail. Use the picture below as a reference to assure proper bracket placement.



When attaching the brackets to the head rail, make sure the locking arm is facing out. Then, position each bracket so that the head rail engages the inside front and back of the bracket—then, push the lock arm inward to lock the head rail into place.



Instructions for Outside Mounting

If you're installing your shade outside of your window, attach the brackets to the head rail as described above. Then, hold the shade as level as possible at the desired height and center it over your window.

Mark the exact location of each bracket with a pencil on the wall. Then, remove the brackets from the head rail and position each one at the marked locations and secure them to the wall using 1 1/8" screws. For easier installation, pre-drill the screw holes using a 5/64" drill bit.

Instructions for Inside Mounting

If you're installing your shade inside your window, clip the brackets onto the head rail as described above. Then, while holding the shade in place inside the window frame, use a pencil to mark the locations where the brackets contact the window frame.

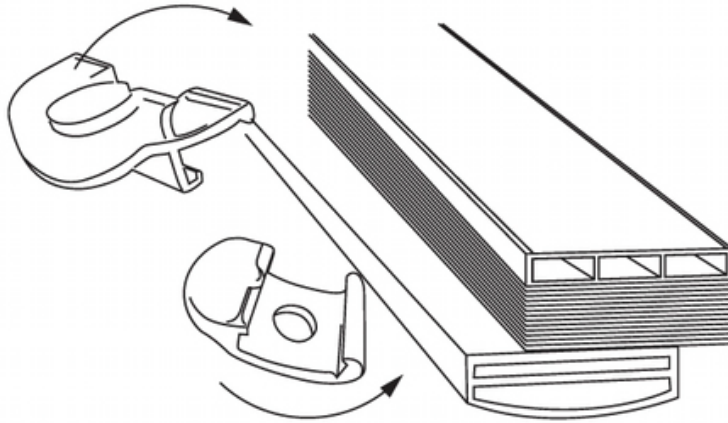
Next, remove the brackets from the head rail and align them with the marks you just made. Attach one bracket to these areas by pre-drilling screw holes with a 5/64" drill bit and then using the included 1 1/8" screws.

STEP 4: SECURING THE HEAD RAIL

To secure the head rail, place it on the brackets that are now secured into the window frame or wall and lock it into place as described in Step 3. Be sure to gently pull on the head rail to make sure it is locked securely into place.

STEP 5: ATTACHING THE HANDLE

To attach the handle to the bottom rail of the shade, see the picture below.



The included handle is designed to minimize contact with the shade fabric to keep it in excellent condition. When raising or lowering the shade using the handle, do so slowly and carefully to make sure the pleated fabric stacks neatly to avoid damaging the shade.

If your shade is wide enough to require 2 handles, divide the total width of the shade by 4—then, attach one handle that distance from each outside edge of the shade to make sure they are installed evenly. In addition, always grasp both handles lifting and lowering the shade.

Raising and the Lowering the Shade

Follow these instructions for proper operation of your shade from Blindster:

Lowering the Shade

- To lower your shade, grip the bottom rail/installed handle and gently pull straight down until it reaches the desired height.

Raising the Shade

- To raise your shade, place your hand under the bottom rail/installed handle and slowly lift up until it reaches the desired height.

Tips for Cleaning Your Shade

- To keep your Blindster shade looking as pristine as the day you bought it, wipe the head rail and bottom rail with a damp sponge on a regular basis to remove dirt and dust.
- To clean the shade fabric, use a feather duster or vacuum with a soft brush attachment to avoid damaging the shade.

No-Tools Cellular Shades

INSTALLATION GUIDE

STEP 1: CHECK PACKAGE CONTENTS

Mounting Hardware kit includes the following:

- Mounting Brackets
- Optional Hold-Down Brackets
- Handle for Bottom Rail
- Adhesive pads for Hold-Downs

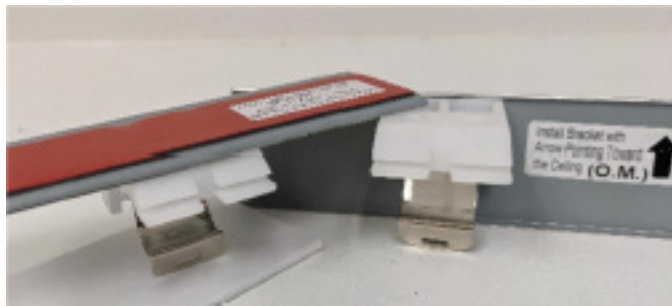
Missing parts? Contact Us at 1-800-264-1190

STEP 2: CHECK PACKAGE CONTENTS

Brackets & Mounting Tape:

Based on your selection of an Inside Mount or Outside Mount you will receive the bracket based on your selected application. Each bracket is attached to an installation plate. Each Installation Plate has two sections of state-of-the-art 3M mounting tape attached to it. This is a powerful, permanent adhesive – care is required to apply it properly.

DO NOT REMOVE THE COVERS FROM THE ADHESIVE STRIPS UNTIL ALL ALIGNMENT AND SURFACE PREPARATION STEPS HAVE BEEN COMPLETED.



Inside Mount Bracket

Outside Mount Bracket

A Mounting bracket should be positioned about 1" to 6" from each end of the head rail. For wider shades that require 3 or more brackets, the 3rd bracket should be spaced evenly between the two outermost brackets.



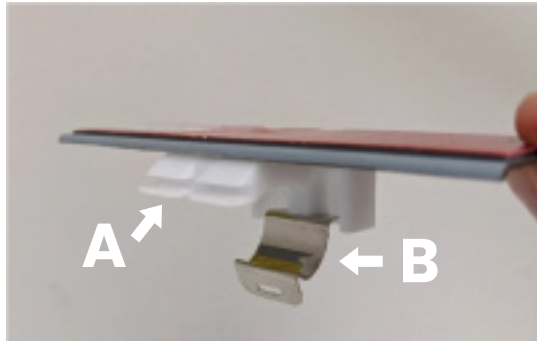
Inside Mount Example



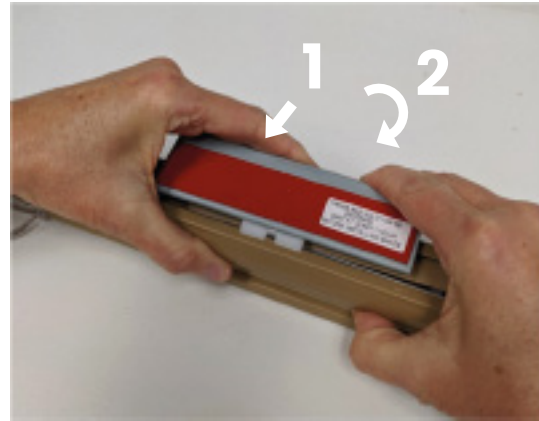
Outside Mount Example

The procedure outlined below will assure proper bracket placement.

To ensure proper bracket placement on the wall, first attach the brackets to the head rail as illustrated and position as described above. The inner front edge of the head rail slides into the slot at the front of each bracket. Push the brackets downward until the flexible tab at the bottom of each bracket snaps onto the back of the head rail. Your shade may be installed either inside the window frame or outside the window frame.



A) Slot in front of bracket. B) Metal tab



- 1) Push front of bracket down and in
- 2) Snap down tab in back



Profile view of bracket inserted into top of headrail

Surface Preparation

The surface that the brackets will be attached to must be clean, dry, and flat. Alcohol pads are included to simplify this process. Lightly rub the alcohol where the brackets will be attached and wait a minimum of 5 minutes to allow surface to dry.

Alignment & Attachment - Inside Mount

With the brackets already attached, hold the shade in the position you plan to mount it inside the window opening. Make a pencil mark at the rear of each bracket plate where it contacts the inside of the window frame.

Remove the brackets from the head rail. One bracket at a Time, peel off the thin red, protective layer that covers each adhesive mounting pad. Align each bracket on the pencil mark that was previously made. **ALIGN EACH BRACKET SLOWLY AND PRECISELY – NOTE THAT WHEN THE ADHESIVE TOUCHES THE MOUNTING SURFACE IT CANNOT BE REMOVED WITHOUT DESTROYING THE BRACKET ASSEMBLY.**

Press each bracket firmly in place for at least 60 seconds. If practical, wait at least an hour before attaching the shade to the brackets. For the first 24 hours try to operate the shade as infrequently as possible.



Inside Mount bracket position

Alignment & Attachment – Outside Mount

Hold the shade with the brackets attached at the height desired on the wall or window frame, and center it over the window opening. Mark the exact location of each bracket with a pencil. Remove the brackets from the head rail. Now, one bracket at a Time, peel off the thin red layer that covers each adhesive mounting pad. Align each bracket with one of the pencil marks – DO THIS SLOWLY AND PRECISELY – WHEN THE ADHESIVE TOUCHES THE MOUNTING SURFACE IT CANNOT BE REMOVED WITHOUT DESTROYING THE BRACKET ASSEMBLY.

Press each bracket firmly in place for at least 60 seconds. If practical, wait at least an hour before attaching the shade to the brackets.

For the first 24 hours try to operate the shade as infrequently as possible.

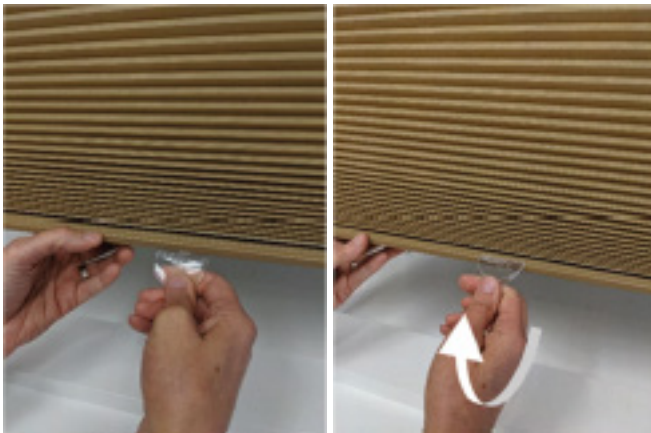


Outside Mount bracket position

STEP 3: ATTACH HANDLE (S)

Attach the Handle to the bottom rail as illustrated. The handle is designed to minimize contact with the shade fabric. Always raise and lower the shade SLOWLY(!) to assure that the pleated fabric stacks neatly.

Wider shades have (2) Handles – to precisely determine the correct position for each handle, divide the total width of the shade by 4, and then attach one handle that distance from each outside edge of the shade – always grasp both handles when lifting and lowering the shade.



STEP 3: ATTACH HANDLE (S)

IMPORTANT : Operating & Care Instructions for Cell Shades **READ CAREFULLY**

- Make sure that the Handles have been attached to the rail(s) as described above (see Step 3)
- To maintain optimal performance of the springs that make your cordless shade function, lift and lower your shade through its full range of motion – all the way up and down every day if possible.
- For shades with a single handle, which must be centered on the rail(s), lift or lower the shade slowly and evenly, keeping the rail(s) level, until the shade is positioned as desired.
- For wider shades with a double set of handles, grasp the handles using both hands and lift the shade slowly and evenly, being sure to keep the rail(s) level.

If you have trouble lifting your cordless shade:

If the shade is left in one position for a long period of time, it might be necessary to lift and lower the shade several times to restore normal function. If the shade has been fully raised for a long period of time, it might tend to spring-back (rebound) slightly from the desired length position. This can also be remedied by lifting and lowering the shade to its maximum length several times.

Always raise and lower the shade SLOWLY(!) to assure that the pleated fabric stacks neatly. To lower the shade: grip the bottom rail handle and slowly pull straight down. To raise the shade, grip the bottom rail handle and push up slowly. Always keep the bottom rail level.

Installation of Optional Hold-Down Brackets

Hold down brackets are provided for optional use. These brackets should be used only if the shade is to be in a permanently lowered position. With the shade fully lowered, make pencil marks at the outside ends of the bottom rail. Remove the liner from one side of each adhesive pad and attach it to the base of each bracket as illustrated. Brackets should then be lined up to the pencil marks and attached by removing the liner from the other side of the adhesive tape.



Close-up view of optional Hold-Down bracket application

Removal of Brackets

This product is meant for permanent application, but it can be removed. Because this is a permanent adhesive, damage to the mounting surface the object is mounted to is a distinct possibility in the removal process. Expect that some patching and refinishing of the surface will be required.

To remove the brackets, insert a knife above each mounting plate and cut the foam tape between adhesive surfaces using a sawing motion. A thin wire, or dental floss can also be used to cut the tape. Hold one end of the wire or floss in each hand; bring the wire or floss between the mounted surfaces and using a sawing motion cut the tape in half. Remove the remaining material from the surface with your fingers or scrape it with a putty knife. The use of citrus solvents may soften the adhesive to aid removal. Do not expect citrus solvent or other solvents to dissolve the adhesive as acrylic adhesives do not dissolve in solvents.

Cleaning

The vinyl head rail and bottom rail can be wiped clean with a damp sponge. To clean the shade fabric, use a feather duster or vacuum lightly using the soft brush attachment.

Replacement Parts

In the event that replacement parts are ever needed, please be sure to provide the following information, if possible:

- A description of the product
- A description of the part needed.

LIMITED LIFETIME WARRANTY

The enclosed product is warranted to the original residential retail purchaser as long as the product remains in the original window.

Covered:

Lifetime:

Entire product against manufacturing defects (i.e. a flaw in the product design, materials, or workmanship that causes the product to no longer function)

Not Covered:

Normal Wear and Tear

Any product that fails due to:

- Abuse • Exposure to salt air • Improper installation • Accident
- Extraordinary use • Improper operation • Alterations
- Improper cleaning misapplication • Improper handling
- Damage from pests/insects/pets • Misuse

Costs associated with:

- Product removal • Transportation to and from the retailer
- Brand label removal • Product re-measure • Product re-installation
- Incidental or consequential damages • Shipping

In the event there are multiple blinds/shades in the same room, only the defective blind/shade will be replaced.

To Report Shipping Damage:

If damage occurred during shipping, call place of purchase and report within 7 calendar days or else you may be denied credit for your damaged product.

To Obtain Service:

If you suspect this product has a manufacturing defect in materials or workmanship: 1. Locate the sales receipt 2. Call place of purchase. Any unauthorized returns will not be accepted.

Warranty Remedy:

THIS SHALL BE YOUR SOLE REMEDY UNDER THIS LIMITED WARRANTY. If this product is found to have a manufacturing defect in materials or workmanship, we will (at our discretion) do one of the following:

- Repair the product
- Replace the product
- Refund the cost of the product

Note:

- Colors vary from lot to lot and may not exactly match sample swatch or previous purchases.
- Discontinued items or color selections will be replaced with the closest equivalent current product.

YOUR RIGHTS UNDER STATE LAW:

This lifetime limited warranty gives you specific legal rights, and you may have other rights, which vary from state to state. Some states do not allow limitations on how long a warranty lasts, so the above limitations may not apply to you. No agent, representative, dealer, or unauthorized employee has the authority to increase or alter the obligation of this warranty. This lifetime limited warranty supersedes any previous versions.